

FlexMI DATA SHEET



A Fully Customizable BI Platform that Transforms Spreadsheet Business Processes

FlexMI is an end-to-end business intelligence solution that delivers customizable, data centric applications quickly and efficiently using standard Microsoft products. This data management suite includes business modeling, master data management, Excel integration, workflow and hierarchical security capabilities. FlexMI enables organizations to perform better, both in terms of efficiency and productivity, by providing a framework for all corporate planning.

SOLVE LINKED SPREADSHEETS

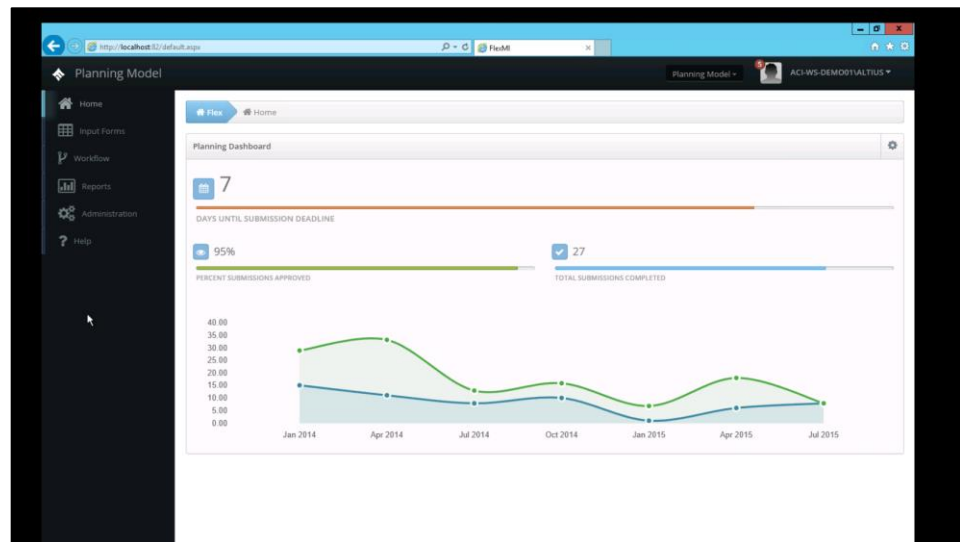
- Avoid manually emailing spreadsheets across the organization. Push and pull spreadsheet data from one central location.

ENHANCE DATA ACCESSIBILITY

- Disparate data that was scattered across the organization is now in one central data repository.

FASTER, ACCURATE REPORTING

- End-users can quickly run any type of analysis on the data using familiar reporting tools.



FEATURES

User Interface

- Versatile to meet differing requirements
 - Utilize Excel for saving financial data
 - SharePoint or web forms for custom applications
- Download Excel workbooks from a custom web based/SharePoint front-end

Data Input

- Allows data to be submitted and retrieved directly from Excel
 - All complexity is hidden from the users
 - Utilizes common tool and requires limited user training
 - Reuse existing workbooks to save time
 - Use all of Excel's built-in functions
- Save text or numeric data and Excel formulas
 - Save text commentary from Excel comments or in-cell content
 - Save complex formulas to prevent against accidental overwrite or deletion
- Dynamically configured workbooks allow for a variable number of columns and rows
 - Workbooks are generated on first load
 - Maintain only one master Excel model per unique workbook type
- Save new master-data from within Excel workbooks
- Display reference data from other systems and data-sources within Excel
- Workbooks can be managed, maintained and modified by trained business power-users

Storage

- SQL Server allows for the immediate aggregation of data
- Model your data using multiple hierarchies including point-in-time analysis
 - Easy modeling tool provided so business can model their own hierarchies
- Multi-dimensional reporting allows for rapid information retrieval and 'slice & dice' capabilities
 - Allows for quick response for future unknown reporting requirements
- Auto-load data from flat-files or other databases (Microsoft/SAP/Oracle/XML/CSV)

Workflow & Reporting

- Model advanced workflows with sequential and parallel activities and notifications
 - Allows for advanced control over:
 - Data load sequencing
 - Roles and Permissions
 - Approvals and sign-off process
- Provides a dashboard to easily monitor and action workflow items.
- Analyze data utilizing in-Excel analysis tools
 - Drill-down on data within Excel
- Develop dynamic parameter driven reports that can be hosted on websites or in SharePoint
 - Enable the business to create their own reports if required
- Have reports automatically emailed on a schedule in multiple formats such as Excel, Word, PDF, etc.
- Multiple visualization and advanced charting options

“Because of the nature of our business, forecasts often change at the last minute,” says Malani. “FlexMI is nimble enough that we can make updates and still deliver accurate data. This helps us get the right data to the right people in the company, so they can move on to new opportunities as quickly as possible. There’s no doubt this will help us compete better in this industry.”

- Sanjay Malani, Advisor, Corporate Planning and Finance, Kosmos Energy

Security

- Supports integrated authentication – no additional usernames or passwords to remember
- Use custom roles that suit your requirements
- Secure users across single or multiple hierarchies, as granular as needed

IMPLEMENTATION

The implementation process is dedicated to ensuring a successful and seamless installation, configuration and transition from your existing business process to the FlexMI software. Our phased approach includes:

- Discovery
- Project Planning
- Customization and Configuration
- Integrated Testing
- Training and Go Live

FlexMI Products



CONTACT US FOR A DEMONSTRATION:

+1 800.816.4850
info@altius-usa.com

2245 Texas Drive
Suite 150
Sugar Land, TX 77479

www.altius-usa.com

Other FlexMI IMPLEMENTATIONS

- G&A Tracking
- Field Planning and Economics
- Production Tracking
- Reserves Reporting
- Compliance Reporting
- Supply Chain Management
- Price Book Management

altius